



07722 584131  
01942 247891



www.stepscic.co.uk



terry@stepscic.co.uk



ISSUE: 13

DATE Jan – April 2023

*Enabling people to reach their full potential*

Time certainly flies when you're having fun, can't believe we are in May already. As always, our attendees here at Steps have been busy.

Whilst spring was fast approaching, our gardening groups had been busy in preparation. They have sown early crops and flowers in the polytunnel as well as potting plugs for the hanging baskets. Outside in the gardens we had been preparing the soil, weeding, and removing debris before planting the perennial bulbs.



We also had frogs in our wildlife area, frogspawn appeared in our pond, these have just developed into tadpoles, and we are excited to watch these develop over the coming weeks.



*For those who purchased hanging baskets last year, if you would like a refill, please return your basket for a reduced cost.*





# Enabling people to reach their full potential



We've thoroughly enjoyed our recent day out in the great outdoors visiting [Nomad Rangers](#) at Bispham Hall in April. A range of outdoor activities were experienced including archery, axe throwing and den building. We learned how to start a campfire on which we toasted marshmallows to make smores and enjoyed campfire cooked chicken curry and rice for lunch. We were pleased to present Nomad Rangers with a bird table and bird box made in our Woodshop to say a huge thank you for their warm welcome and providing (as several of our attendees said) an 'absolutely amazing day'.



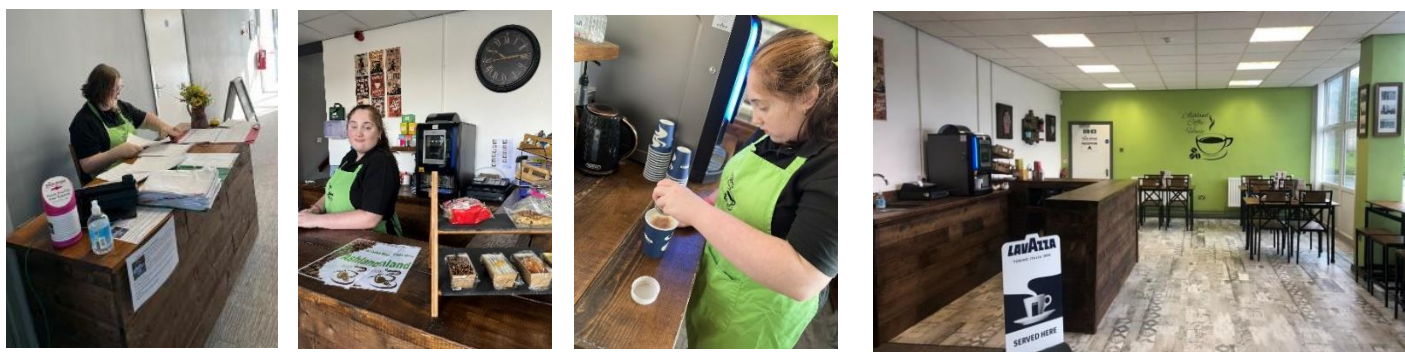
CALL US ON:  
07722 584131



In our on-site salon Gemma and Chantelle have been busy using our training heads to practice putting hair up. They have selected appropriate tools whilst developing their creative and fine motor skills, with excellent results.



If you have not visited yet, please do, as a warm welcome is guaranteed at Ashland Coffee House. Managed by STEPScic on behalf of Think Ahead, this exciting opportunity enables our attendees to gain valuable work experience within the community whilst developing a wide range of transferable skills. Jessica has been working in reception and is now familiar with the duties and responsibilities required in this area whilst also undertaking small administration tasks. Emily has learned how to operate the hot drinks machine, operate the cash register, and stock take whilst demonstrating excellent customer service skills. A fantastic and affordable option if you are looking for a **coffee and a cake**.





# Enabling people to reach their full potential



In our baking and cake decorating sessions, 'Teamwork makes the dream work!'

David and Lewis have demonstrated this as they worked together to create this delicious 3 tier Victoria sponge cake complete with blue icing. Following a visual recipe, they demonstrated both their baking and cake decorating skills with much success.



Delicious lemon drizzle cupcakes have been the focus of our recent bake-off. The competition heated up as they measured and combined their ingredients to produce the perfect treat. Well done to Fran for achieving the weeks Bake-off Champion, excellent cupcakes, a sure crowd-pleaser!.



Our daily cooking sessions in which we prepare lunch are always very popular. Attendees have a choice in the planning of weekly menus which usually include some of their favorite dinners. Like cottage pie, pasta bolognese and pasta bakes, chicken dinners, homemade soup and sandwiches, and even a full English breakfast dinner and many more. After making the list of all ingredients needed, they then get set to prepare the freshly cooked lunch of the day. This helps encourage and support independent living skills, food hygiene and health and safety in the kitchen, also planning and preparation.



**CALL US ON:  
07722 584131**



Inspired by a batik gifted to us by a local artist our art groups have followed directed drawing to create their own sunflower which they have developed into their own batik. Demonstrating their developing drawing skills and excellent control with the wax and ink application, the finished outcomes are absolutely stunning.



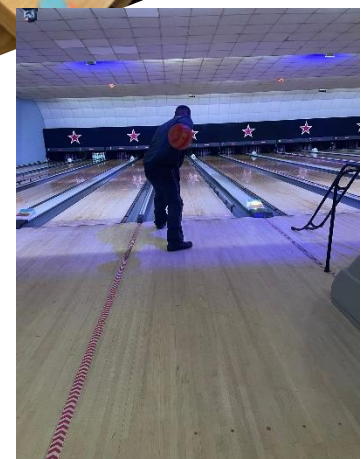
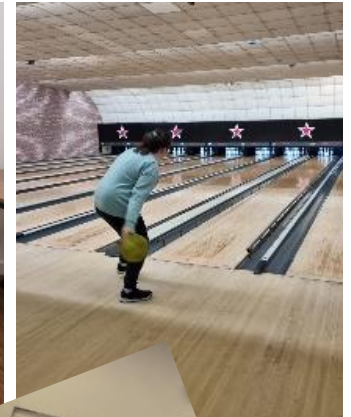
**We are located at:**  
Ashland House, Dobson Park Way, Ince, Wigan, WN2  
2DX



# Enabling people to reach their full potential



In our large, spacious rooms there is space to enjoy and promote face-to-face interaction through game play. Whether that be through snooker, table tennis or tabletop games, it's a fantastic way to relax, unwind and have fun whilst developing social skills, decision making and confidence. Game play doesn't just take place in base, as visits to the local bowling alley prove popular and competitive. We are also very grateful to Ince Rose Bridge sport and community club for use of their indoor sport dome for our sport sessions.



**CALL US ON:  
07722 584131**



As Coronation fever gripped the nation, we crowned our very own Paul and Emily to be our King and Queen for the day. Their first order was for their kingdom of STEPSsic to play prize bingo before being treated to a fabulous feast. A right royal party followed with party games and Karaoke. We thoroughly enjoyed celebrating the Coronation and we would like to take this opportunity on behalf of everyone at STEPSsic to wish King Charles III a wonderful Coronation and a happy and healthy reign.



**We are located at:**  
Ashland House, Dobson Park Way, Ince, Wigan, WN2  
2DX

## Enabling people to reach their full potential



*Thank you*

We would like to thank Omniplas Ltd for creating and donating this fantastic sensory water feature for outdoor, interactive play. This will be a fantastic addition to our garden and will encourage therapeutic water play whilst also stimulating creativity and imagination. This generous gift will have a positive impact on those who access STEPSscic.



We approached OMNIPLAS LTD, Markland Street, Wigan WN1 3BT (back of the old Bulldog Tools building) and asked if they had any old guttering that we could have. They asked what it was for, and we explained it was to make a sensory water feature. They told us they would sort some out and give us a ring when ready. Omniplas Ltd then went on and decided to make the sensory water feature for us. They mounted it on a display panel, so it was ready for use when they asked us to collect it. We thought we were going to pick odd bits up and was truly overwhelmed when they presented us with the fully completed feature. One again thank you to all involved, and for such a selfless generous act.

*Thank you*

*Thank you*

*Thank you*

CALL US ON:  
07722 584131

We are located at:  
Ashland House, Dobson Park Way, Ince, Wigan, WN2  
2DX